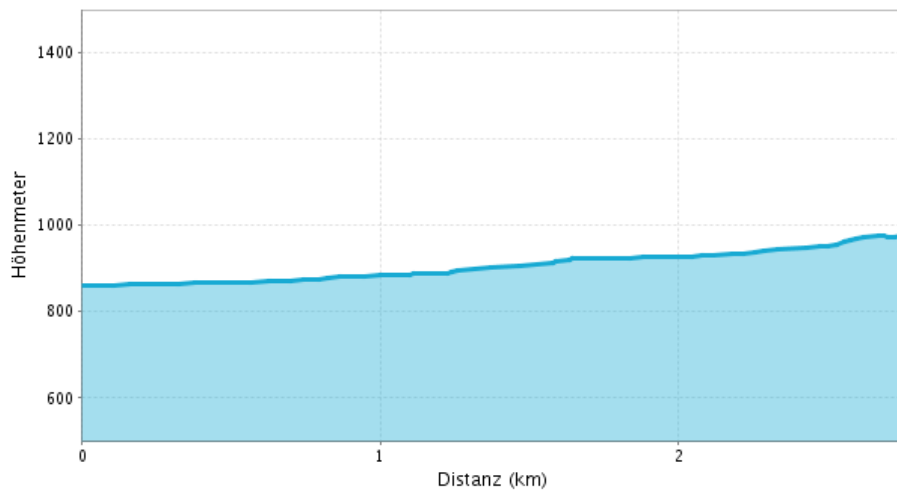
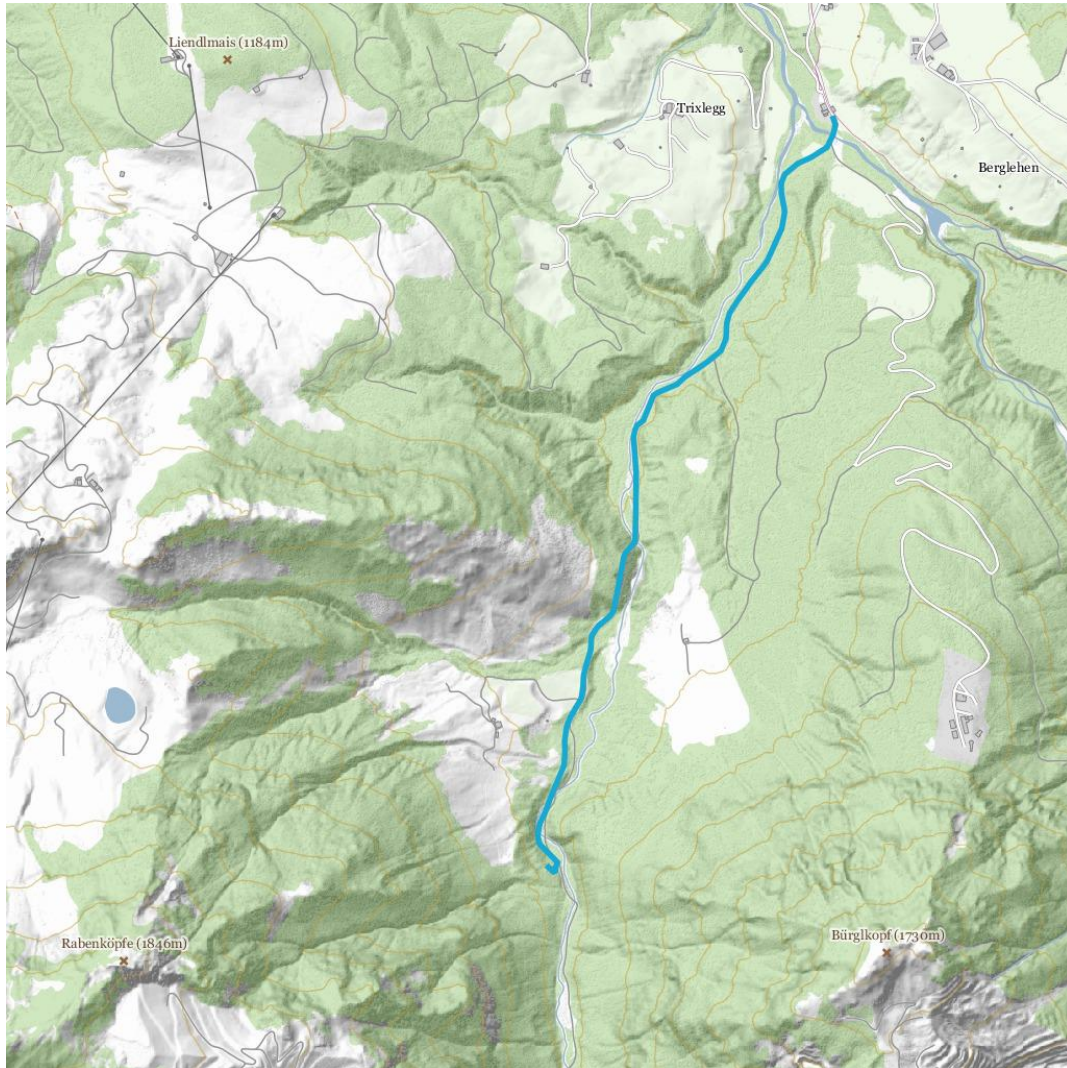


 **Schreiende Brunnen**





Schreiende Brunnen



Information

Walk from the Gasthof Eiserne Hand along the Hörndlinger Graben ober the bridge and right along the Schwarzbach to the "Schreiende Brunnen". If you want, you can hike to the alpine pastures in the Hörndlinger Graben. Don't forget to rest. Possibility to rest: Hochhörndler hut.

At a Glance

Elevation uphill:
206

Highest point:
1013

Distance:
2.7

Information

Difficulty:
leicht / Wanderweg

Total walking time:
1h 0min

Contact

Name:
Tourismusverband PillerseeTal

Street / number:
Dorfplatz 1

Zip code:
info@pillerseetal.at

Town:
Fieberbrunn

Phone:
0043 5354 56304

E-Mail:
0043 5354 56304

Website:
www.pillerseetal.at