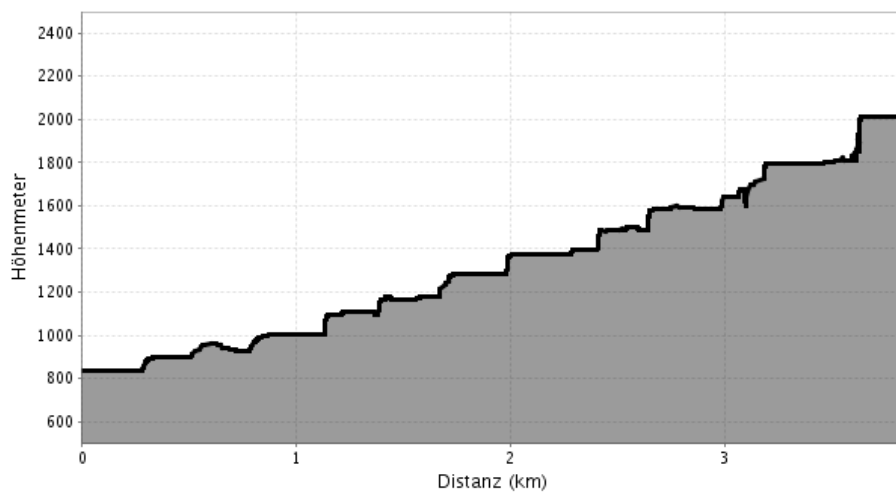
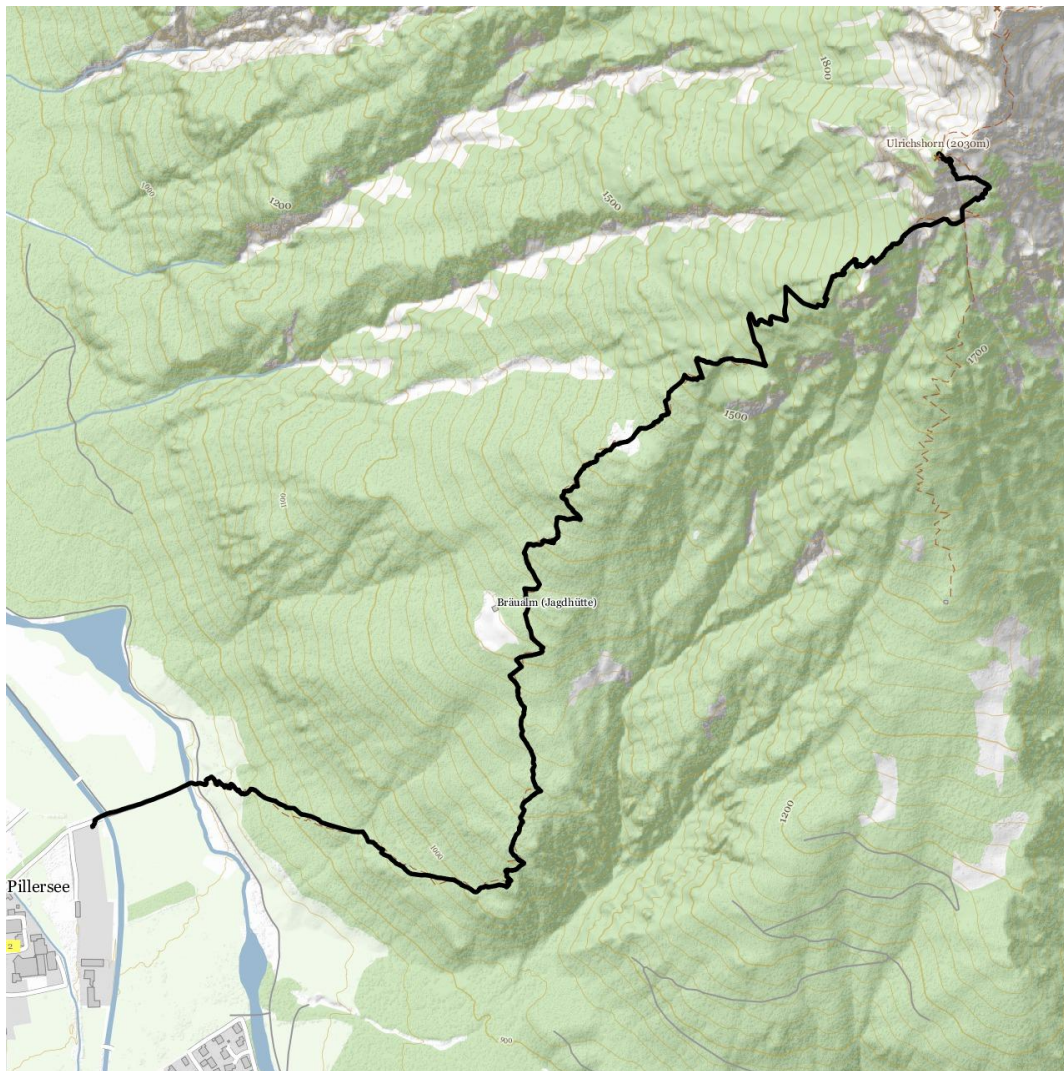


 **Heimkehrerkreuz/Ulrichshorn**



## Heimkehrerkreuz/Ulrichshorn



### Information

Attention: experienced hikers only!

Starting point: from the "Dorf/Pillersee parking" cross the footbridge over the small river. Walk straight ahead and up the winding trail to the Bräuplatte at 1.430m. From there walk through the alpine pines up to the rocks of the Steinberge in order to reach the Heimkehrerkreuz/Ulrichshorn.

### At a Glance

**Elevation uphill:**  
2282

**Highest point:**  
2030

**Distance:**  
3.8

### Information

**Difficulty:**  
schwierig / Schwarzer Bergweg

**Total walking time:**  
3h 0min

### Contact

**Name:**  
Infobüro St. Ulrich am Pillersee

**Street / number:**  
Dorfstraße 17

**Zip code:**  
6393

**Town:**  
St. Ulrich am Pillersee

**Phone:**  
0043 5354 56304

**E-Mail:**  
info@pillerseetal.at

**Website:**  
www.pillerseetal.at