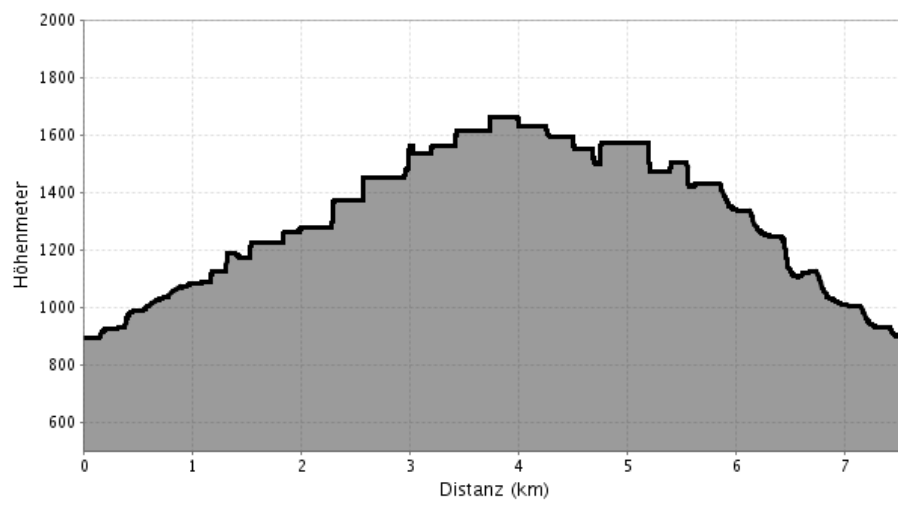
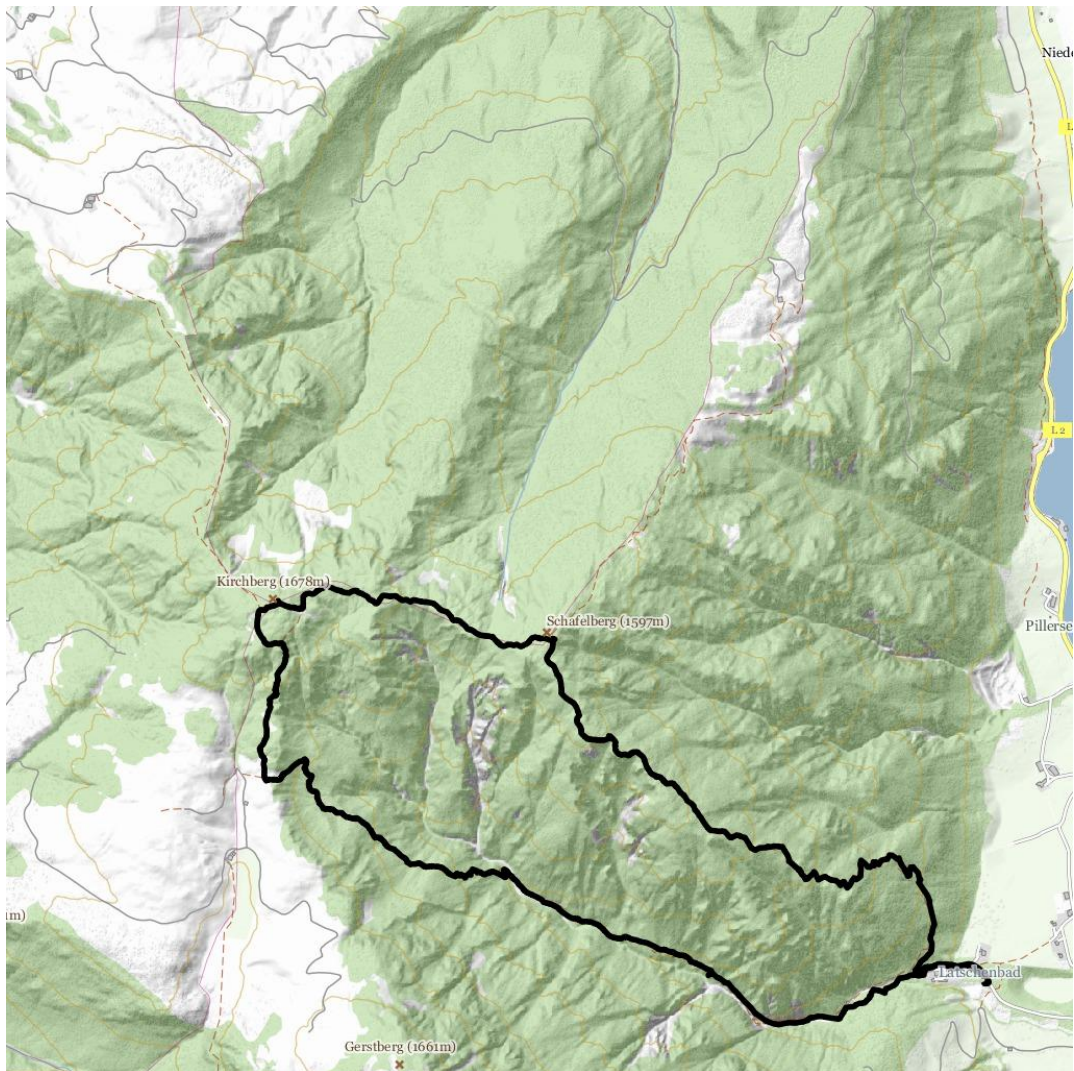


Kirchberg/Schafelberg



Kirchberg/Schafelberg



Information

Starting point: from the Latschenbad walk via the spectacular "Steinere Stiege" through the so-called Kalktal (Lime Valley) to the peak of the Kirchberg at an altitude of 1.680m. From there further on to the Schafelberg (1.597m). The short but very steep descent leads over the Teufelspalven directly back to the Latschenbad.

At a Glance

Elevation uphill:

1116

Highest point:

1678

Distance:

7.5

Information

Starting point:

Latschenbad

Destination point:

Latschenbad

Difficulty:

schwierig / Schwarzer Bergweg

Total walking time:

5h 0min

Type of Route

Loop tour:

yes

Contact

Name:

infobüro St. Ulrich am Pillersee

Street / number:

Dorfstraße 17

Zip code:

6393

Town:

St. Ulrich am Pillersee

Phone:

0043 5354 56304

E-Mail:

info@pillerseetal.at

Website:

www.pillerseetal.at