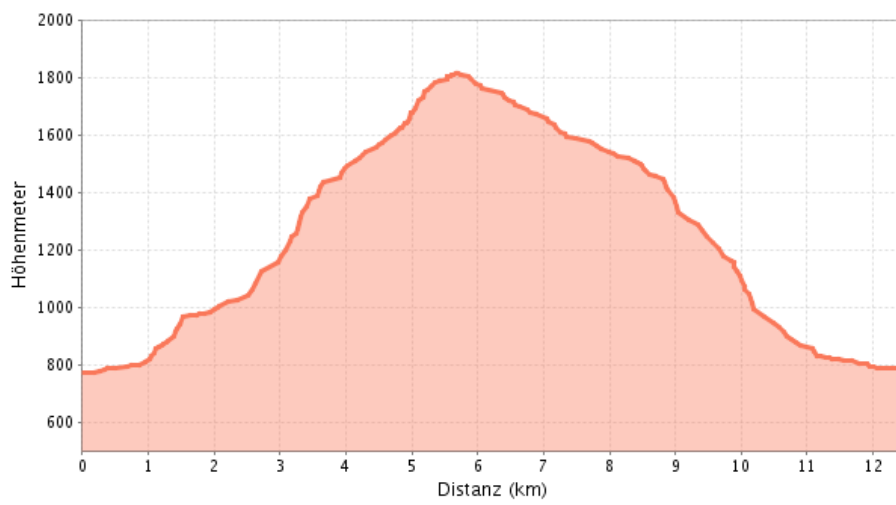
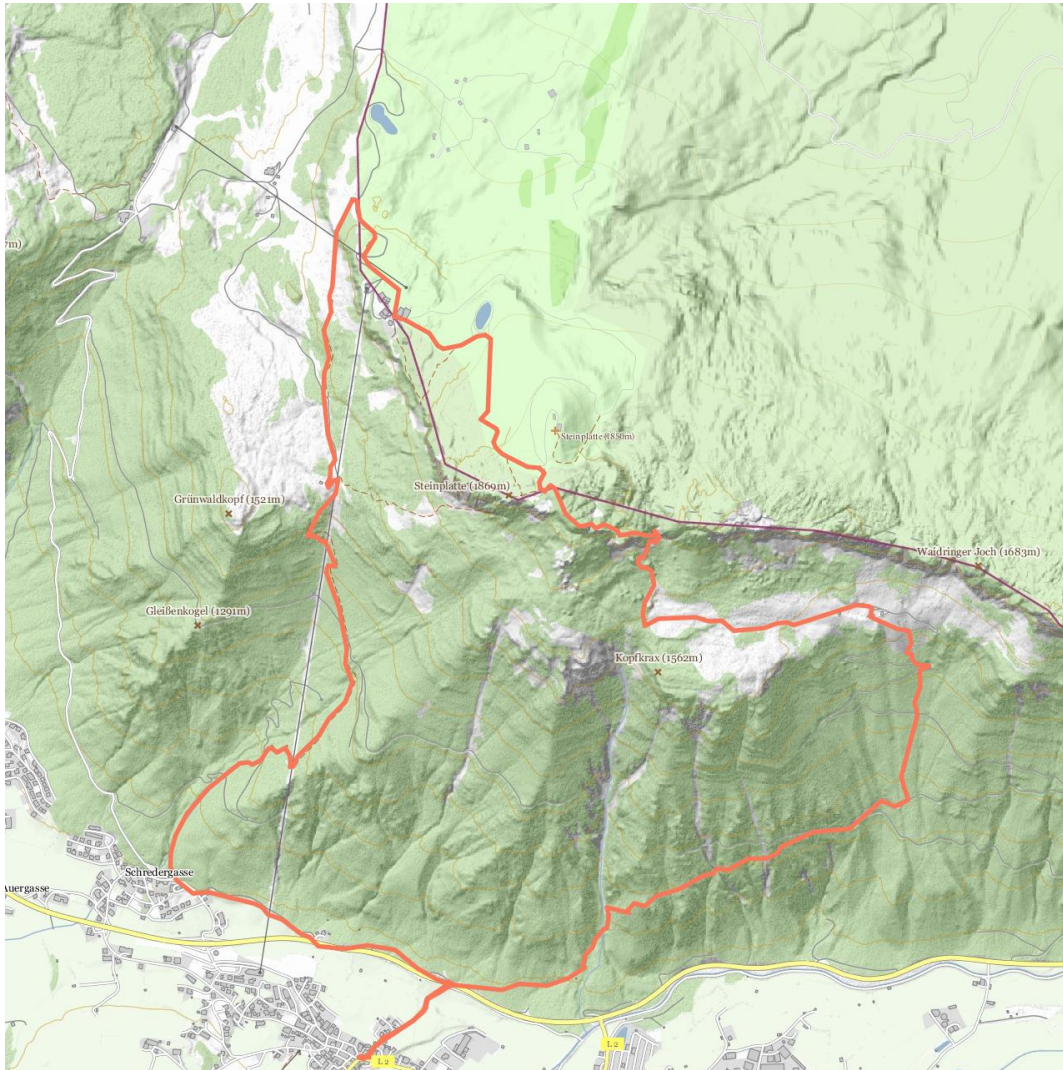


 **Via Wemeteigenalm to the
Steinplattengipfel**





Via Wemeteigenalm to the Steinplattengipfel



Information

From the village center you walk through the "Hintergasse" and the underpass. Follow the Elmbachsteig on the right and walk up to the Wemeteigenalm and then further on to the Wieslochsteig. From there you climb over a belayed track up to the peak. You return over "Kammerkör" and the Körsteig back to the Grünwaldalm. From there you take the steep track downhill to the Schredergasse back to Waidring.

At a Glance

Elevation uphill:
1457

Highest point:
1835

Distance:
12.4

Information

Difficulty:
mittelschwierig / Roter Bergweg

Total walking time:
5h 0min

Type of Route

Loop tour:
yes

Contact

Name:
Infobüro Waidring

Street / number:
Dorfstraße 12

Zip code:
6384

Town:
Waidring

Phone:
0043 5354 56304

E-Mail:
info@pillerseetal.at

Website:
www.pillerseetal.at